

Lynch team building events prove to be a winning formula!



Golf tournament

Lynch Plant Hire held a summer staff event on Wednesday 27th June 2018 at Topgolf, Watford. This was an opportunity for all staff across the business to let down their hair down and enjoy banging a few balls off the green. The evening included food, drinks and snacks. The winner of our team building event was Jamie Marlow with a top score of 102!

Lynch are planning a number of events across the year for team building. "We believe it's really important that the staff have chance to build up relationships both inside and outside of the office environment. The stronger the relationships become the better our business performs" commented Merrill Lynch.



Go-karting

Lynch Plant held their fourth endurance team go-karting event at the Whilton Mill National circuit on the 20th of June. With over 100 people in attendance, including customers and staff from 14 different companies the event was great fun for all.

The winners of the endurance race were: 1st place Laing Murphy HS2 JV, 2nd place Paul John Group and 3rd place Breheny (Rugby Radio Team).



Derby day

At the Epsom Derby meeting Lynch hired an open top bus where we had the pleasure of 24 clients joining the team for a very exciting day.

Luke Lecoyte commented: "The day was very relaxing and thoroughly enjoyable. It's very rewarding to spend quality time with so many people".

Steven Sutch added: "Our very first open top bus with some fantastic people was a real winner and we have already planned next year's event which will be even bigger".



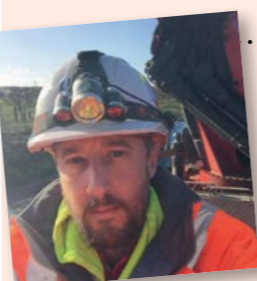
LYNCH PEOPLE MEETING HIRE DEMANDS

More photos from the Family Day...



Rushden Transport Award

Craig McCormack (left) has been rewarded for his tireless efforts ensuring that he goes the extra mile to satisfy the customers demands. Especially on the A14 project and the M6 where his work was highlighted by the client. Well done Craig.



Going the extra mile

Recognition to Neil Moore for going beyond the call of duty. He has been a rock on the A14 where, apart from doing an exceptional job on his Artic Hiab, he has been covering other drivers shifts to ensure the project continues to run smoothly...

Good luck, Edel!

Edel Gallagher left us this June to start her maternity leave. Lots of luck to the new mum-to-be and hope to see her back soon!



Warm welcome to our new starters



Harriet Howard
Midland Transport Administrator



Sheila Weale
A14 sweeper driver

LYNCH LEADER

Your regular newsletter from L-Lynch Plant Hire & Haulage
July 2018



Lynch Family Day is a great success

Over 4000 people attended the Lynch family open day on Sunday 8th July and the event proved to be as 'red hot' as the temperature on a glorious summer's day.

The day was an opportunity for staff, suppliers, customers and the local community to share in the continued success of the Lynch business as well as celebrate the official opening of Lynch's new head office in Boundary Way, Hemel Hempstead. "This is a great platform for our future success", commented Merrill Lynch, Operations Director, "with our new premises here in Hemel, we will be able to continue to support our business growth and meet our customers hire demands for many years to come".

The day was very much skewed towards creating fun for all the family and Lynch had organised a whole host

of events to keep both young and old entertained on what turned out to be the hottest day of the year so far. There were a number of fun operator challenges as well as crazy golf, a 'buccaneering' bull ride, children's soft play areas, balloon artist, face painting, a charity dunk tank, an ice cream van, hog roast, along with live demonstrations of heavy plant and equipment. There were also opportunities for 'wanna-be' operators to try out the simulator plus training and recruitment advice on hand.

Merrill Lynch added "as we are not always able to see or interact with many of our staff, especially

our operators and drivers who are continually busy on infrastructure projects up and down the country, we like to hold this type of event on an annual basis in order to get to meet them in person. I have seen so many happy faces here today which always brings a smile to the business face. So a huge thanks to everyone that took part and got involved, especially our suppliers, because without their efforts the day would not have been so successful and suffice to say we will be looking to plan more events like this in the future."

See more fun photos of the Family Day on the back page!

Lynch bring their 'A' game to the A14

With the A14 Project hitting new highs in terms of progress this month, Lynch began the huge task of delivering the first of 540 concrete slabs to site.

These 22.5 tonne panels will form the impressive RGO viaduct. When completed the total crossing length of 747m will be carrying traffic over the flood plain and river.

The successful delivery of such an important phase of the project is something that Midlands transport manager, Karl Varley, has worked hard to ensure. As Karl explains, "The logistics of loading and transporting such large structures is something that has to be planned and executed without any margin for error."



The precast slabs are being used instead of an in-situ build to ensure a much higher quality finish, as well as providing a safer working process.

“The logistics of loading and transporting such large structures is something that has to be planned and executed without any margin for error.”

Karl Varley, Midlands transport manager



One of Lynch's new Bell B30E dumptrucks working with Aggregate Industries on the A14 project.

Givin' it some wellie!

Lynch excavators at work on the Wellinborough rail bridge project.

With the new Stanton Cross development set for Wellinborough, the project will result in the arrival of over 3,000 new homes, jobs, shops, schools, and leisure facilities. The increase in local people that this will bring has meant that the existing Wellinborough railway station will

need enhancing to service the new community. Lynch excavators have been working alongside contractors on the installation of a new railway bridge which will provide the first step in implementing vital transport links between the Railway Station, the town, and the new development.



Manitous roll in

This month sees the arrival of a new fleet of Manitou telehandlers. The new arrivals include the MT732 model as well as the extremely versatile MT625. Although compact the 6m model still packs an impressive punch. Compact dimensions make it an invaluable presence on building projects involving lower heights, whilst still boasting an impressive turning radius and lift capacity. The new models are certainly proving to be exciting new additions to our telehandler fleet.



HS2 Enabling Works

Lynch Haulage was recently awarded the HS2 Enabling Works Package at Euston for the removal of Muck Away and the import of Crushed Concrete.

They removed 140 loads of Muck and imported 75 loads of Crushed Concrete over a period of four weeks.

Ben Lennon, lead foreman at CSJV said: "This is the first time I have used Lynch but was very impressed with their positive attitude and ability to constantly deliver, even with very short notice and constantly changing plans".

This is one of the first phases of the very large Euston site where they are building a new taxi rank so the old one

can be demolished to make way for the new HS2 platforms. Lynch hopes that on the back of this success Lynch Haulage will be awarded the St James Square Garden project.

Ben Lennon then went on to say: "We have a very difficult logistics procedure and team if the truth be told but, with Craig's hard work, we managed to get round them most of the time and complete the project there on time".



Lynch invest over £1m in new Bell dumptrucks

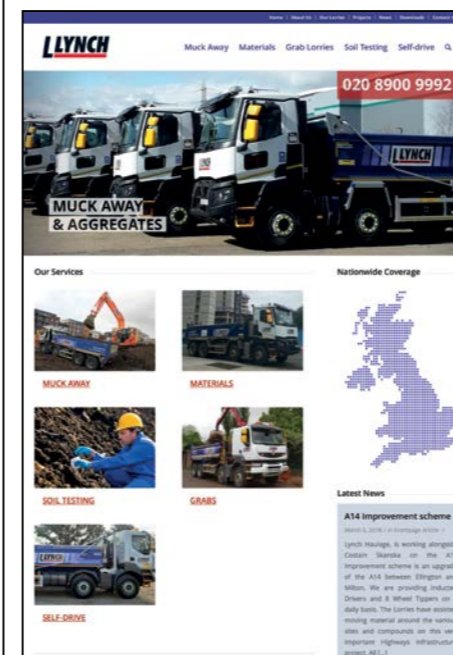
In June Lynch attended and took part in the Hillhead plant show in the Peak district. The show is a highlight of the year for both suppliers and customers and offers a great place to showcase products. A machine that caught many a visitor's eye was the new Bell B20E dumptruck. This machine

was one of over a million pound investment in this new product with Bell this year.

Nick Learoyd, managing director of Bell equipment UK, commented: "Bell UK is proud to be associated with Lynch and looks forward to working

New haulage site goes live

Due to our continuing growth within the aggregate and muck away sector Lynch launched a new website last month for the Haulage Division. This will help give greater focus to our objective of being the best service provider ensuring our clients have their waste removed in a timely, compliant and professional manner. Visit it at: www.lynychhaulage.com



Pole position for Tom Shepherd!

Thank you to Tom Shepherd of our Midlands depot for this fantastic photograph of a Lynch low loader delivering to Silverstone.

New addition - Hybrid Excavator

This month Lynch welcomes the arrival of the first Komatsu Hybrid Excavator. With the ever-increasing issue of global warming at the forefront of excavator design, the hybrid machine is an exciting addition to our own fleet. The excavator is designed to convert the kinetic energy created by swing movement into electricity. This electricity is captured in an electric motor and used by the excavator to assist with the powering of its components. As a result fuel consumption is improved which is not only beneficial to the environment but also results in impressive fuel savings.



Lynch machines in action...



Photo taken by Chris Kent.

Lynch team win the Lean Award for the A14 innovation

On submission to the Lean Ideas Competition, the 'Lynch hire telematics', was awarded first place.



It was judged by Mark Flicker, Lean Lead, A14 Integrated Delivery Team, to be "an excellent example of a proactive self-motivated move towards a more lean/efficient organisation which benefits all parties on the scheme".

Great work Emery, Amy and Chris.

Natta's Golf Day raises over £23K for charity

Lynch recently joined Natta Homes on their annual golf day. The team were pleased for the opportunity to down tools and help towards raising an amazing sum for Natta's registered charities. £23,850 was raised collectively for Rainbow Trust, The Royal Marsden and Brightwells Gostrey Centre.

